



VAG ZETA® Knife Gate Valve

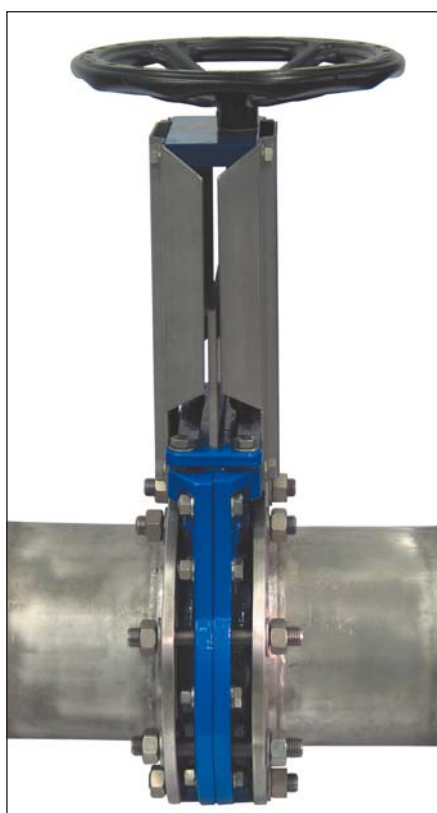
Unique by its versatility



VAG ZETA® Knife Gate Valve

Unique by its versatility

The protection of our environment requires demanding plant and process technology. This enhances also the requirements of the planners and operators of waste water plants for high functional safety and reliable operation of the utilised valves. In addition to that, the plant constructor selecting a valve under economic aspects will orientate more and more towards products with widespread applicability, installation advantages and a high degree of operational safety. The new VAG ZETA Knife Gate Valve perfectly responds to all of these requirements due to its versatility.



Installation advantages and safety

- full-flange design, leakproof in both flowing directions
- installation both as wafer type valve and for pipeline end at full differential pressure without counter flange
- pipeline can be dismantled on one side under full operational pressure when valve closed
- due to integrated scraper system any installation position of the valve is possible with high operational safety
- the above mentioned advantages lead to a reduction of possible errors during installation and thus to an important enhancement of the installation safety

Safety of operation

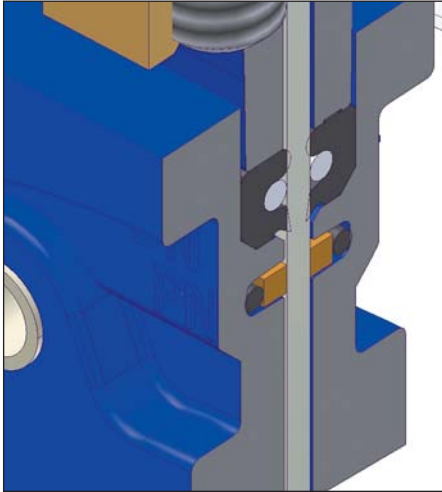
- completely leakproof in both flowing directions
- smooth and unobstructed flow passage without any risks of deposits nor the resulting malfunctions
- enclosed and compact body designed in stainless steel sheets offers a high degree of personal protection from the moved parts
- in addition to that, the body serves as effective shielding and protection of the knife and of the adjacent driving parts from disturbing environmental influences like dust, dirt, aggressive air or strong sun rays
- high stability of the shape and thus low deformation even under high external forces (e.g. operation by a chain-wheel or the installation of an electric drive when in horizontal position)

VAG ZETA® Knife Gate Valve

Technique and Service Life

ZETA Sealing System

- pressure supported sealing
- low operation torques
- minimum wear and long service life
- simple maintenance sealing concept

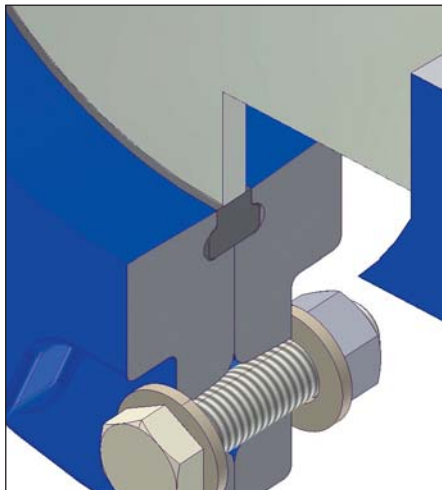
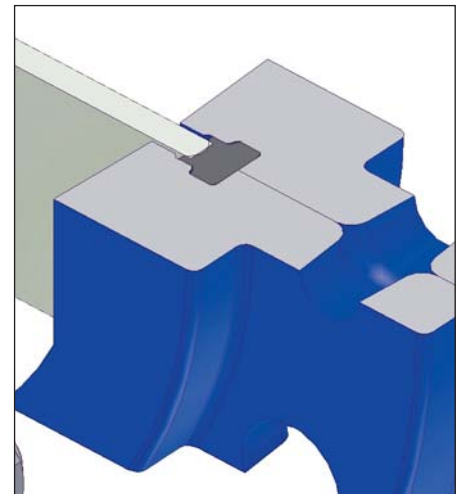


Conception of the lateral seal

- special profiled lateral seal guarantees leakproofness under pressure towards the outside
- integrated PTFE guiding rods guarantee an optimum guiding of the knife
- maintenance friendly lateral seal allows adjustment during operation and easy replacement without dismantling the valve from the pipeline
- high operational safety due to integrated scraper system for permanent cleaning of the knife at every stroke
- high service life of the sealing system as the lateral seal will not be subject to strong abrasion by the dirty knife

Elastic bearing of the knife

- soft and elastic lateral guiding of the knife in a special profiled through sealing
- pressure supported sealing system guarantees a high leakproofness at low operational forces
- wear resistance of the knife guiding enhanced by an ideal combination of shape and material
- metallic axial end positions of the knife in case of overpressure on one side



Unobstructed and smooth flow passage

- low risks of deposits or malfunction caused by foreign particles
- large sealing surface in the bottom of the valve guarantees a safe sealing support even at high lateral forces and axial deformation of the knife
- great volumes of elastomer of the seal guarantee high sealing reserves even at partial destruction

VAG ZETA® Knife Gate Valve

Automation now or later

- the modular design allows a great variety of additional design options concerning automation or sensor technology
- the ZETA Knife Gate Valve can be fitted subsequently with all available drive modes (e.g. electric drive, pneumatic drive, etc.) without dismantling the valve from the pipeline
- the compact body designed in stainless steel sheets allows an easy and standardised connection of sensors to the valve



ZETA Knife Gate Valve with handwheel



ZETA Knife Gate Valve with electric drive



ZETA Knife Gate Valve with cylinder

Universal ROTAG® Remote Control System

- the versatile ROTAG Remote Control System allows a great number of installation positions and applications even in difficultly reachable parts of a plant
- deal connection between operator and valve

headstock



bearing



VAG-Armaturen GmbH
 Carl-Reuther-Str. 1
 68305 Mannheim
 Germany
 Phone +49 621 749-0
 Fax +49 621 749-2153
 info@vag-armaturen.com
 www.vag-armaturen.com